

11750 DEWDNEY TRUNK ROAD MISSION, BC

19.37 acres
Total Lot Size

FOR LEASE
INDUSTRIAL LAND

IPG ICONIC
PROPERTIES
GROUP
RE/MAX COMMERCIAL ADVANTAGE



OPPORTUNITY

DETAILS

Iconic Properties Group is pleased to present this unique opportunity to acquire this INR zoned industrial land parcel approx. 19.37 acres of total space, all yard space no buildings.

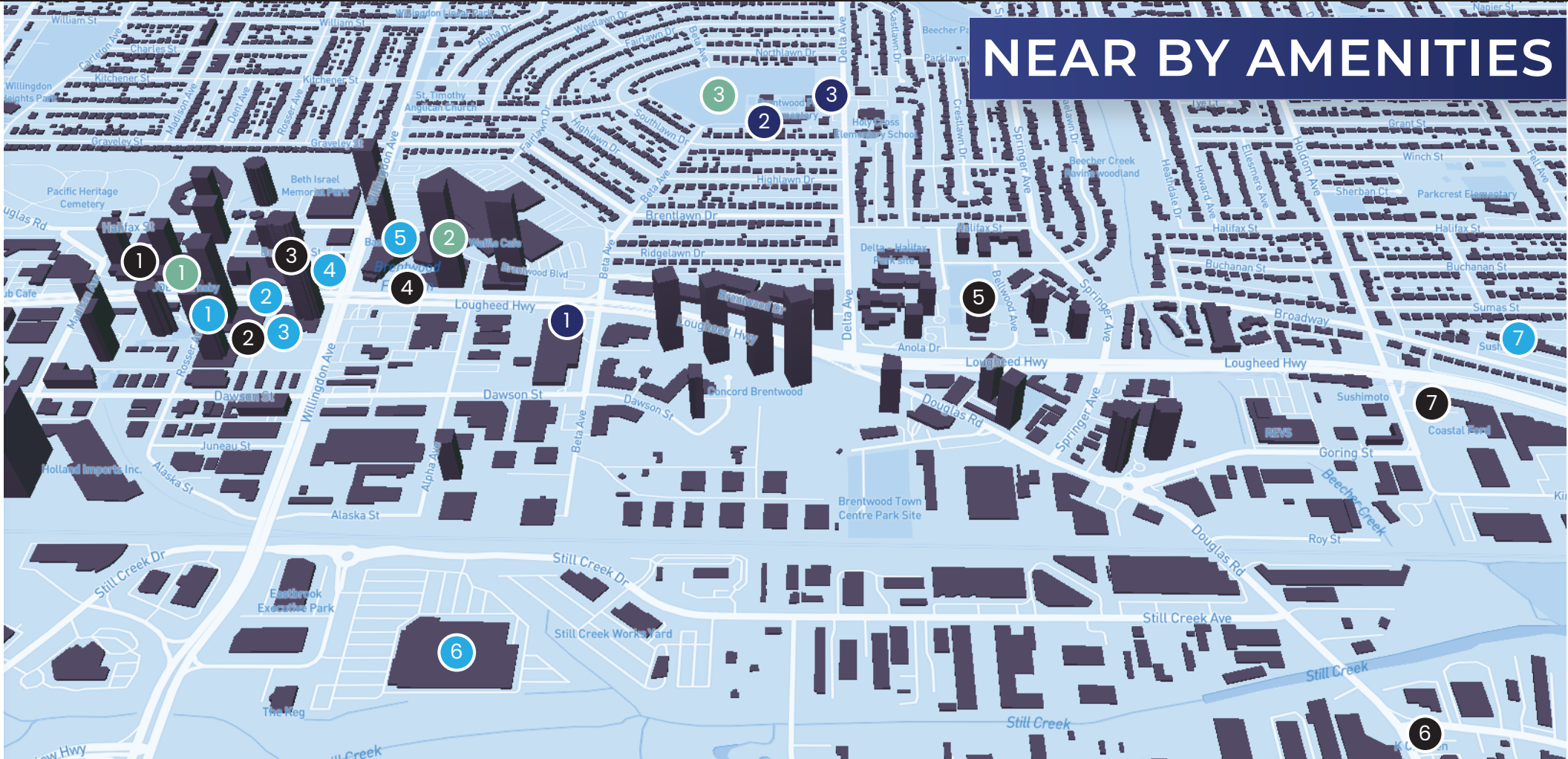
The Subject Property is nestled in the rural Steelhead community of Mission BC, which has its own oasis and privacy in the heavily wooded area. Feel the nature surrounding this property.

With easy and convenient access to Mission downtown, 10 min drive to Highway 7 known as Lougheed Hwy and 14 min drive to Highway 11 which will take us further south into the US Border Crossing.

INR Zoning provides for uses which are Resource Extraction and Aggregate management.

CIVIC ADDRESS	11750 Dewdney Trunk Rd, Mission, BC
LOT SIZE	19.37 acres
YEAR BUILT	2008
PROPERTY TAX (2022)	\$14,264.88
NEIGHBORHOOD	Steelhead
ZONING	INR
LEASE RATE	Base rent: \$1.50/sqft/year
PID	013-383-591

NEAR BY AMENITIES



FOOD & DRINK

- 1 Joey Burnaby
- 2 Starbucks
- 3 Fatburger Lougheed Burnaby
- 4 McDonalds
- 5 Wonderffle Cafe
- 6 K Chicken Burnaby
- 7 Starbucks

SHOPS & SERVICES

- 1 Whole Foods Market
- 2 Shoppers Drug Mart
- 3 BC Liquor Store
- 4 Esso
- 5 The Amazing Brentwood
- 6 Costco Wholesale
- 7 Buy-Low Foods

PARKS & RECREATION

- 1 SPINCO Burnaby
- 2 REC Room
- 3 Brentwood Park

EDUCATION

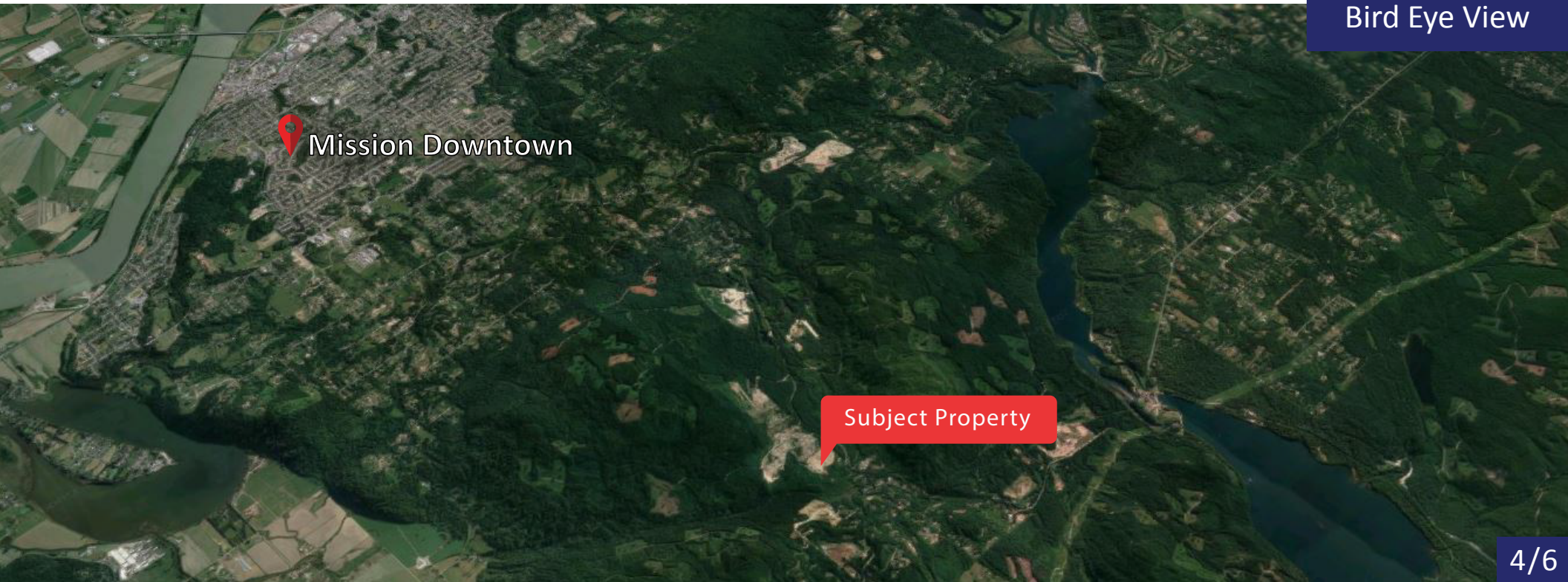
- 1 CEFA Early Learning Burnaby
- 2 Brentwood Park Elementary
- 3 Holy Cross Elementary

COMMUNITY

The District of Mission is nestled on a southern coastal mountain slope, overlooking the lush valley of the mighty Fraser River. Founded in 1892, Mission, BC was originally inhabited by the Stó:lō First Nations people, and today this rapidly growing and dynamic centre is home to a population of some 38,000 residents.



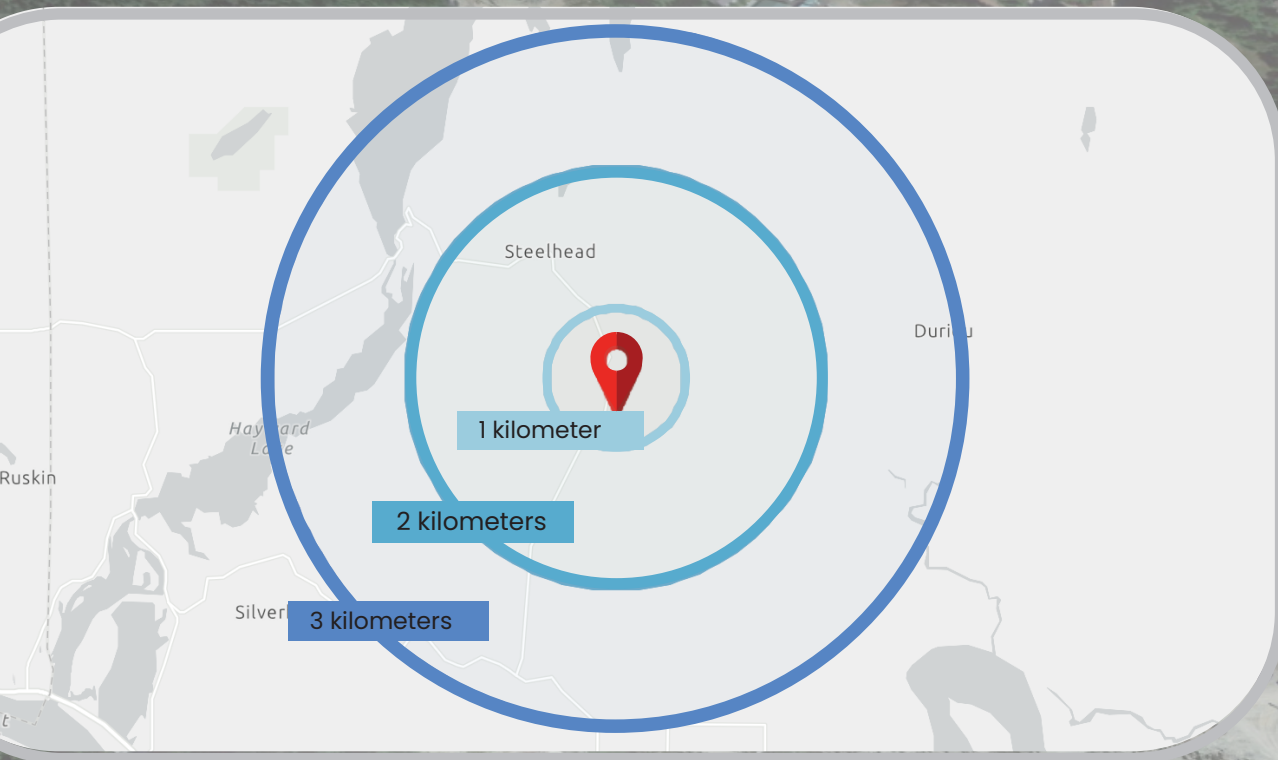
Front View



Bird Eye View

DEMOGRAPHICS

LOCATION



Ideally situated, Mission is just a 15-minute drive from the US border, and approximately 70 km East of the City of Vancouver. Mission is surrounded by the incredible beauty of mountainous vistas and natural forest settings. The climate is warm in the summer and mild and wet in the winter. Flowers bloom most of the year, as the area is naturally hospitable to a wide variety of plant life and vegetation. Topographically, Mission enjoys an immense variation of hillsides and gullies which maintain natural neighbourhood enclosures, spectacular views, and a sense of permanence.

	1 km	2 km	3 km
Population (2021)	30	438	2,452
Population (2025)	30	477	2,640
Projected Annual Growth (2021 - 2025)	0%	1.72%	1.49%
Median Age	47.5	46.8	45.6
Average Household Income (2021)	\$130,472	\$130,493	\$124,392
Average Persons Per Household	2.7	2.9	2.9

Khash Raeisi*

Founder

P: 778-987-7029

E: Khash@iciconic.com

Randy Zhao*

Co-Founder

P: 778-251-1001

E: Randy@iciconic.com

Sunny Bansal*

Partner

P: 778-840-2661

E: Sunny@iciconic.com

Office

P: 778-819-2776

E: Contact@iciconic.com

W: www.iciconic.com



**ICONIC
PROPERTIES
GROUP**

Downtown Vancouver Office
#501 - 889 W Pender Street
Vancouver, BC
V6C 3B2

South Vancouver Office
7235 Fraser Street
Vancouver, BC
V5X 1R7

NOTHING BUT ICONIC

**Personal Real Estate Corporation*

RE/MAX COMMERCIAL ADVANTAGE

Copyright © 2022 Iconic Properties Group by REMAX Commercial Advantage. This document has been prepared by Iconic Properties Group for advertising and general information only. Iconic Properties Group makes no guarantees, representations or warranties of any kind, expressed or implied, regarding the information including, but not limited to, warranties of content, accuracy and reliability. Any interested party should undertake their own inquiries as to the accuracy of the information. Iconic Properties Group excludes unequivocally all inferred or implied terms, conditions and warranties arising out of this document and excludes all liability for loss and damages arising there from. This publication is the copyrighted property of Iconic Properties Group and/or its licensor(s).
Copyright © 2022 Iconic Properties Group by REMAX Commercial Advantage.